



Authorised Dealer: **BODYLINE SPORTS**



Catalogue 2024

## school supplies

Wooden Play Station

Institutional Furniture

School Furniture Floorings

Play Houses

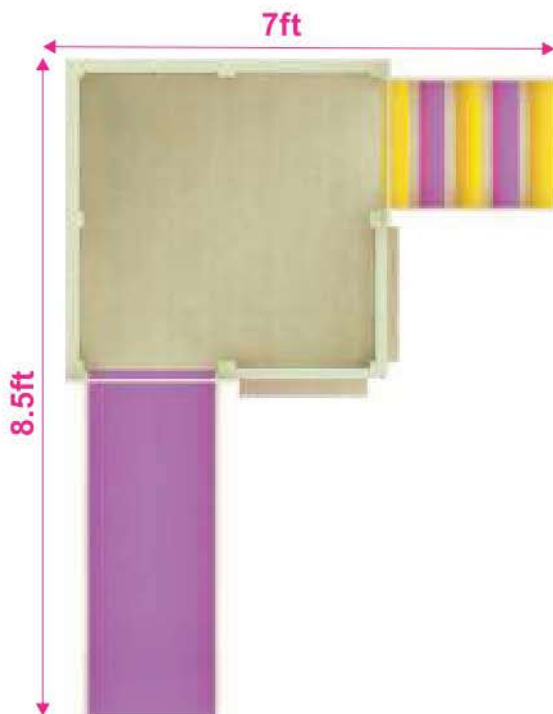
Slides & Swings



Corner Play Area

| Product Description |               |
|---------------------|---------------|
| Item No.:           | 901           |
| Item Size:          | L8.5xB7xH7 ft |
| Material:           | Rubber Wood   |
| Remarks:            |               |

**RATE: 159999**



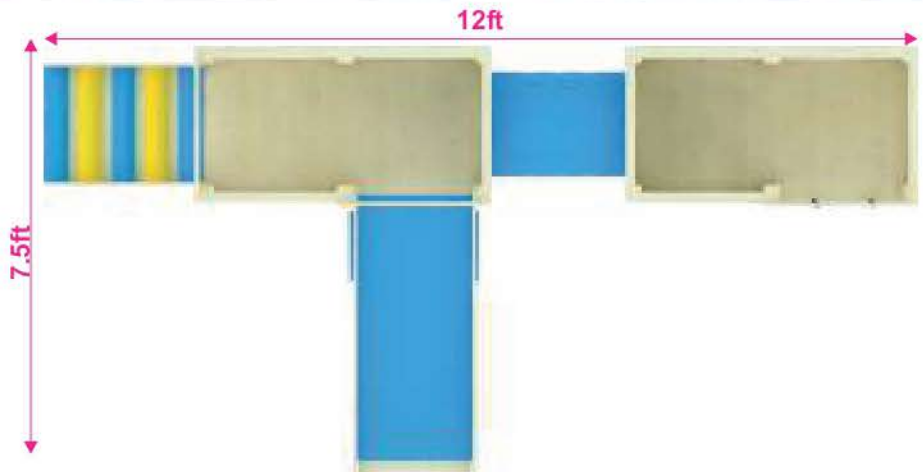


## Tunnel Multiplay Area

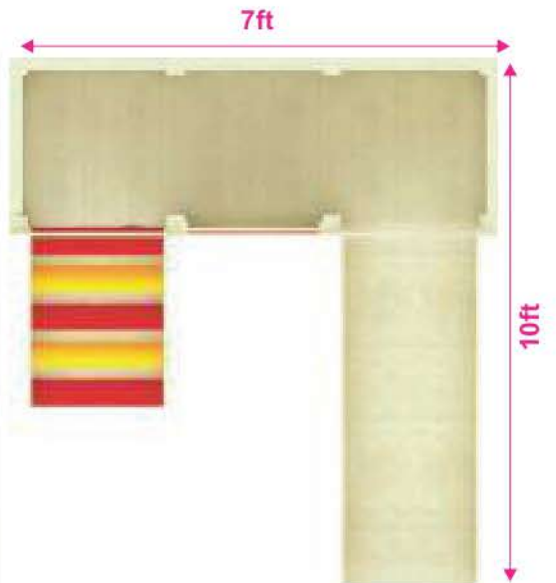
### Product Description

|            |                |
|------------|----------------|
| Item No.:  | 902            |
| Item Size: | L12xB7.5xH7 ft |
| Material:  | Rubber Wood    |
| Remarks:   |                |

**RATE: 189999**



# Indoor Play Area

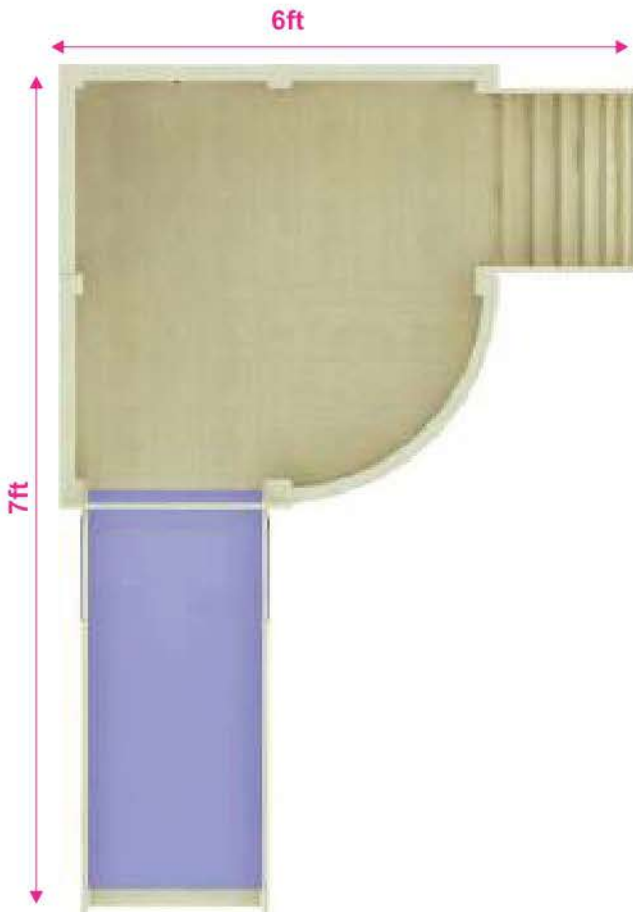


**Triple Station Play Area**

| Product Description |               |
|---------------------|---------------|
| Item No.:           | 903           |
| Item Size:          | L10xB7xH14 ft |
| Material:           | Rubber Wood   |
| Remarks:            |               |

**RATE: 169999**





## NexaPlay Area

| Product Description |             |
|---------------------|-------------|
| Item No.:           | 904         |
| Item Size:          | L7xB6xH7 ft |
| Material:           | Rubber Wood |
| Remarks:            |             |

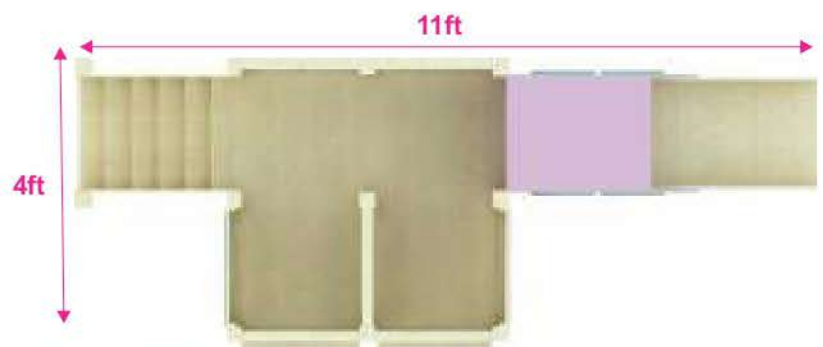
**RATE: 139999**



## Dual Play Area

| Product Description |              |
|---------------------|--------------|
| Item No.:           | 905          |
| Item Size:          | L11xB4xH7 ft |
| Material:           | Rubber Wood  |
| Remarks:            |              |

**RATE: 149999**

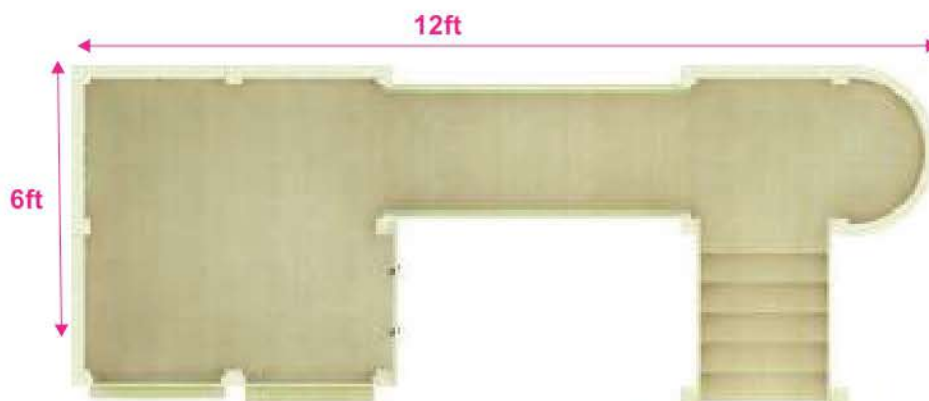




## Bridge Play Area

| Product Description |              |
|---------------------|--------------|
| Item No.:           | 906          |
| Item Size:          | L12xB5xH6 ft |
| Material:           | Rubber Wood  |
| Remarks:            |              |

**RATE: 189999**





# Outdoor Fun Activities



Body Zorb Ball

Product Description

|            |          |
|------------|----------|
| Item No.:  | 1508     |
| Item Size: | H 135 cm |
| Remarks:   |          |

**RATE: 44999**



Water Ball

Product Description

|            |              |
|------------|--------------|
| Item No.:  | 1507         |
| Item Size: | DIA 2 sq mtr |
| Remarks:   |              |

**RATE: 44999**



## Pool

| Item No | Size    | Size                 | RATE   |
|---------|---------|----------------------|--------|
| 1503    | 20 x 20 | L240xL240xH20 inches | 139999 |
| 1504    | 25 x 25 | L302xL302xH24 inches | 159999 |
| 1505    | 30 x 30 | L360xL360xH24 inches | 199999 |



## Paddle Boat

| Product Description |                   |
|---------------------|-------------------|
| Item No.:           | 1501              |
| Item Size:          | 122 x 134 x 79 cm |
| Remarks:            |                   |

**RATE:34750**

## Slider - 7 pcs

| Product Description |                 |
|---------------------|-----------------|
| Item No.:           | 2171            |
| Item Size:          | L8 x B2 x H2 ft |
| Remarks:            |                 |

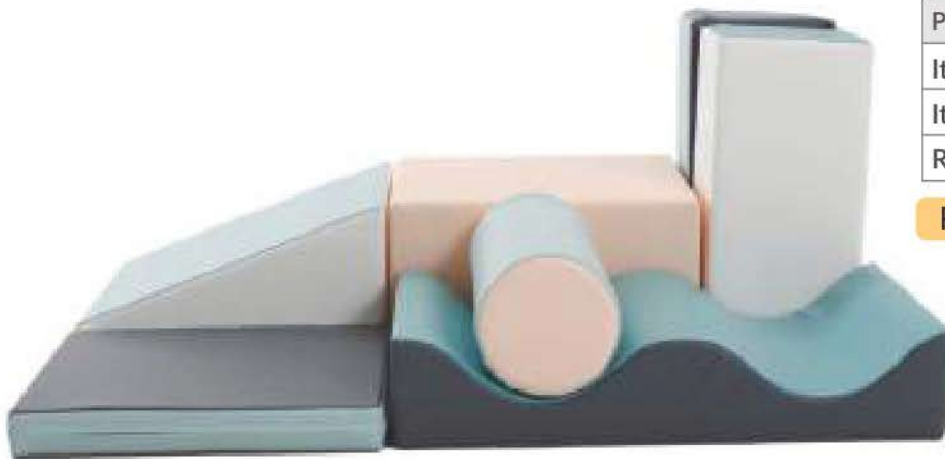
**RATE: 33999**



## Roll Set - 6 pcs

| Product Description |                     |
|---------------------|---------------------|
| Item No.:           | 2174                |
| Item Size:          | L5 x B2.5 x H2.5 ft |
| Remarks:            |                     |

**RATE: 38999**



## Hurdle Climber

| Product Description |                 |
|---------------------|-----------------|
| Item No.:           | 2173            |
| Item Size:          | L5 x B2.x H2 ft |
| Remarks:            |                 |

**RATE: 27999**





### Soft Rocker

| Product Description |                   |
|---------------------|-------------------|
| Item No.:           | 2176              |
| Item Size:          | L3 x B1.5 x H2 ft |
| Remarks:            |                   |

**RATE: 9999**



### 4 Step Slider

| Product Description |                 |
|---------------------|-----------------|
| Item No.:           | 2175            |
| Item Size:          | L6 x B2 x H2 ft |
| Remarks:            |                 |

**RATE: 24999**



### Tunnel Set

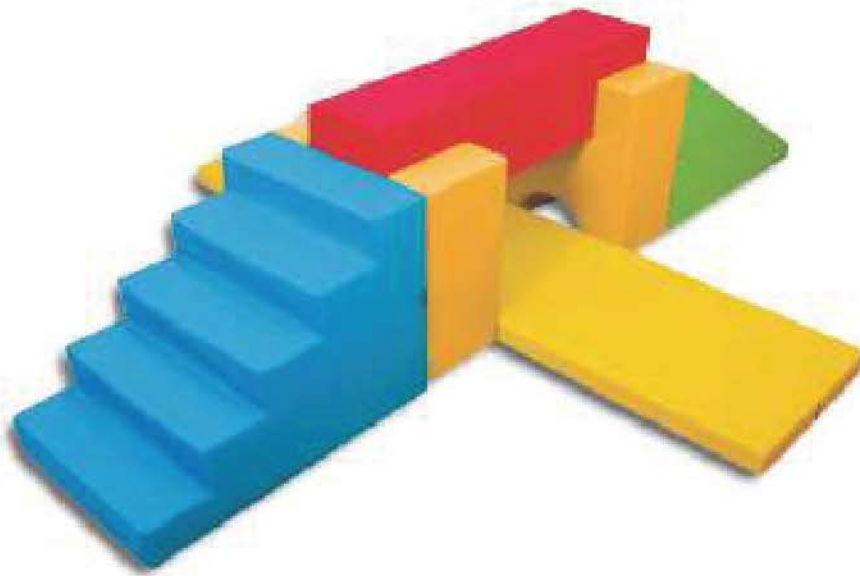
| Product Description |                 |
|---------------------|-----------------|
| Item No.:           | 2177            |
| Item Size:          | L5 x B4 x H1 ft |
| Remarks:            |                 |

**RATE: 35999**

## Hexagon Set

| Product Description |                  |
|---------------------|------------------|
| Item No.:           | 2172             |
| Item Size:          | DIA 8 ft x H2 ft |
| Remarks:            |                  |

**RATE: 149999**



## Beam Set - 6 pcs

| Product Description |              |
|---------------------|--------------|
| Item No.:           | 2156         |
| Item Size:          | L12xB7xH2 ft |
| Remarks:            |              |

**RATE: 49999**

## Round Set - 6 pcs

| Product Description |               |
|---------------------|---------------|
| Item No.:           | 2155          |
| Item Size:          | L8xB3xH4.2 ft |
| Remarks:            |               |

**RATE: 38999**



## Tube Slide Set

| Product Description |                 |
|---------------------|-----------------|
| Item No.:           | 2173            |
| Item Size:          | L7 x B7 x H3 ft |
| Remarks:            |                 |

**RATE: 27999**



## Climber Set

| Product Description |              |
|---------------------|--------------|
| Item No.:           | 2174         |
| Item Size:          | L7x B7xH3 ft |
| Remarks:            |              |

**RATE: 38999**

## Toddler Set

| Product Description |                |
|---------------------|----------------|
| Item No.:           | 2175           |
| Item Size:          | L5x B2.5xH2 ft |
| Remarks:            |                |

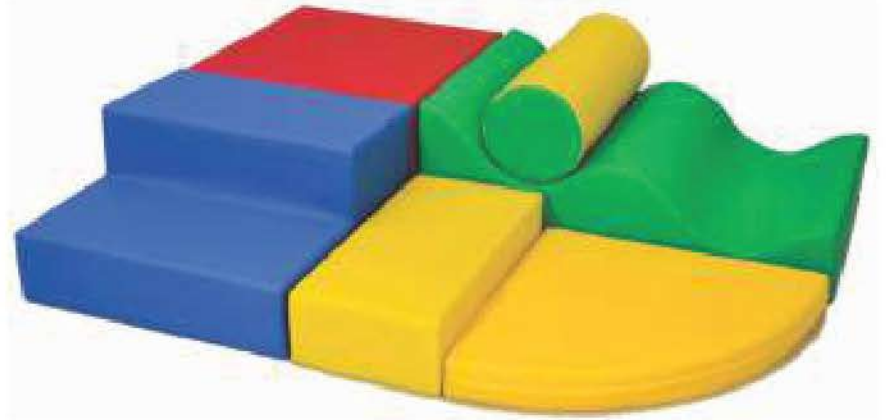
**RATE: 24999**



## Roll Set - 6 pcs

| Product Description |                 |
|---------------------|-----------------|
| Item No.:           | 2150            |
| Item Size:          | L5 x B4 x H1 ft |
| Remarks:            |                 |

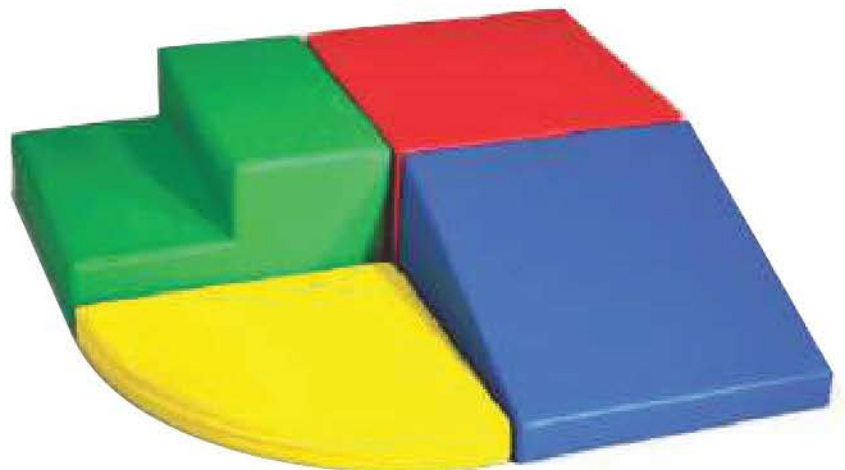
**RATE: 35999**



## Slider - 4 pcs

| Product Description |                 |
|---------------------|-----------------|
| Item No.:           | 2152            |
| Item Size:          | L4 x B4 x H1 ft |
| Remarks:            |                 |

**RATE: 29999**



## Ball Pool Set

| Product Description |                 |
|---------------------|-----------------|
| Item No.:           | 2157            |
| Item Size:          | L5 x B5 x H1 ft |
| Remarks:            |                 |

**RATE: 38999**



## Foam Hut - 14 pcs

| Product Description |                 |
|---------------------|-----------------|
| Item No.:           | 2159            |
| Item Size:          | L4 x B3 x H5 ft |
| Remarks:            |                 |

**RATE: 29999**



## Navy Ship Play Set

| Product Description |             |
|---------------------|-------------|
| Item No.:           | 2180        |
| Item Size:          | L9xB4xH5 ft |
| Remarks:            |             |

**RATE: 139999**

## Ball Pool Combo

| Product Description |                  |
|---------------------|------------------|
| Item No.:           | 2160             |
| Item Size:          | L16 x B8 x H9 ft |
| Remarks:            |                  |

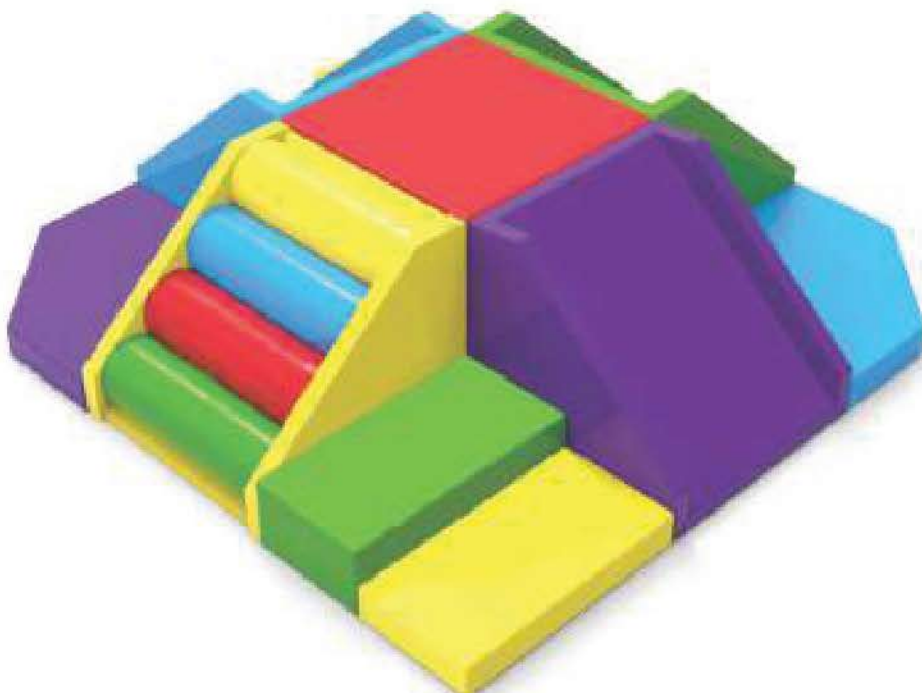
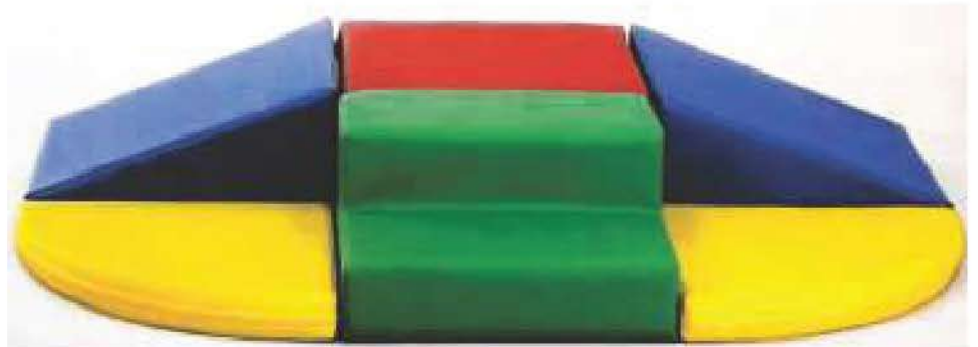
**RATE: 299999**



## Curve Set - 9 pcs

| Product Description |                 |
|---------------------|-----------------|
| Item No.:           | 2158            |
| Item Size:          | L6 x B4 x H1 ft |
| Remarks:            |                 |

**RATE: 48999**



## Center Set

| Product Description |                   |
|---------------------|-------------------|
| Item No.:           | 2151              |
| Item Size:          | L8 x B8 x H2.5 ft |
| Remarks:            |                   |

**RATE: 69999**



**Soft Crescent**

| Product Description |                 |
|---------------------|-----------------|
| Item No.:           | 2178            |
| Item Size:          | L8 x B8 x H2 ft |
| Remarks:            |                 |

**RATE: 7999**



**Soft play Cube 9 pcs Set**

| Product Description |                 |
|---------------------|-----------------|
| Item No.:           | 2181            |
| Item Size:          | L8 x B8 x H2 ft |
| Remarks:            |                 |

**RATE: 13999**



## House Set

| Product Description |                 |
|---------------------|-----------------|
| Item No.:           | 2179            |
| Item Size:          | L8 x B3 x H3 ft |
| Remarks:            |                 |

**RATE: 39999**



## Step Slide Set - 5 pcs

| Product Description |                   |
|---------------------|-------------------|
| Item No.:           | 2185              |
| Item Size:          | L4 x B4 x H1.5 ft |
| Remarks:            |                   |

**RATE: 28999**



## Soft Corousel

| Product Description |                 |
|---------------------|-----------------|
| Item No.:           | 2182            |
| Item Size:          | Dia 6 ft x H8ft |
| Remarks:            | Not Motorable   |

**RATE: 249999**

## Multi Climber

| Product Description |                 |
|---------------------|-----------------|
| Item No.:           | 2183            |
| Item Size:          | L8 x B5 x H9 ft |
| Remarks:            |                 |

**RATE: 89999**

## Ladder Corner Climber

| Product Description |                 |
|---------------------|-----------------|
| Item No.:           | 2184            |
| Item Size:          | L5 x B5 x H9 ft |
| Remarks:            |                 |

**RATE: 99999**



## Bean Bag

| Product Description |            |
|---------------------|------------|
| Item No.:           | 2186       |
| Item Size:          | Small size |
| Remarks:            |            |

**RATE: 999**



**Play Area 1**

| Product Description |                |
|---------------------|----------------|
| Item No.:           | 3001           |
| Item Size:          | L20xB20xH9.5ft |
| Remarks:            |                |



**Play Area 2**

| Product Description |                |
|---------------------|----------------|
| Item No.:           | 3002           |
| Item Size:          | L20xB20xH9.5ft |
| Remarks:            |                |



**Play Area 3**

| Product Description |              |
|---------------------|--------------|
| Item No.:           | 3003         |
| Item Size:          | L16xB16xH9ft |
| Remarks:            |              |



**Play Area 4**

| Product Description |              |
|---------------------|--------------|
| Item No.:           | 3004         |
| Item Size:          | L13xB13xH9ft |
| Remarks:            |              |



**Play Area 5**

| Product Description |              |
|---------------------|--------------|
| Item No.:           | 3005         |
| Item Size:          | L13xB13xH9ft |
| Remarks:            |              |



**Play Area 6**

| Product Description |              |
|---------------------|--------------|
| Item No.:           | 3006         |
| Item Size:          | L24xB16xH9ft |
| Remarks:            |              |



**Play Area 7**

| Product Description |              |
|---------------------|--------------|
| Item No.:           | 3007         |
| Item Size:          | L13xB13xH9ft |
| Remarks:            |              |



**Play Area 8**

| Product Description |              |
|---------------------|--------------|
| Item No.:           | 3008         |
| Item Size:          | L25xB16xH9ft |
| Remarks:            |              |

# Dormitory Furniture



## Wooden Triple Bed

| Product Description |                       |
|---------------------|-----------------------|
| Item No.:           | 925                   |
| Item Size:          | L96xB42xH65"          |
| Remarks:            | Mattress not included |

**RATE: 109999**



## Wooden Quad Bed

| Product Description |                       |
|---------------------|-----------------------|
| Item No.:           | 926                   |
| Item Size:          | L102xB80xH62"         |
| Remarks:            | Mattress not included |

**RATE: 149999**



## L Shape Bed

| Product Description |                       |
|---------------------|-----------------------|
| Item No.:           | 927                   |
| Item Size:          | L120xB80xH62"         |
| Remarks:            | Mattress not Included |

**RATE: 149999**



### Double Steel Bed

| Product Description |                |
|---------------------|----------------|
| Item No.:           | 928            |
| Item Size:          | L78xB55.5xH67" |
| Remarks:            |                |

**RATE: 89999**



### Iron Funky Bed

| Product Description |              |
|---------------------|--------------|
| Item No.:           | 929          |
| Item Size:          | L78xB30xH67" |
| Remarks:            |              |

**RATE: 34999**



### Iron Bunk Bed

| Product Description |              |
|---------------------|--------------|
| Item No.:           | 930          |
| Item Size:          | L78xB30xH67" |
| Remarks:            |              |

**RATE: 31999**

### Single Bed

| Product Description |              |
|---------------------|--------------|
| Item No.:           | 931          |
| Item Size:          | L78xB30xH30" |
| Remarks:            |              |

**RATE: 9999**





## Aircraft Play Station

### Product Description

|            |                |
|------------|----------------|
| Item No.:  | 601            |
| Item Size: | L22XB12XH10 ft |
| Remarks:   |                |

**RATE: 360000**





**Small Slide**

| Product Description |                     |
|---------------------|---------------------|
| Item No.:           | MS - 001            |
| Item Size:          | L9 x B2.5 x H4.5 ft |
| Remarks:            |                     |

**RATE: 39999**

**Large Slide**

| Product Description |                  |
|---------------------|------------------|
| Item No.:           | MS - 007         |
| Item Size:          | L15 x B2 x H9 ft |
| Remarks:            |                  |

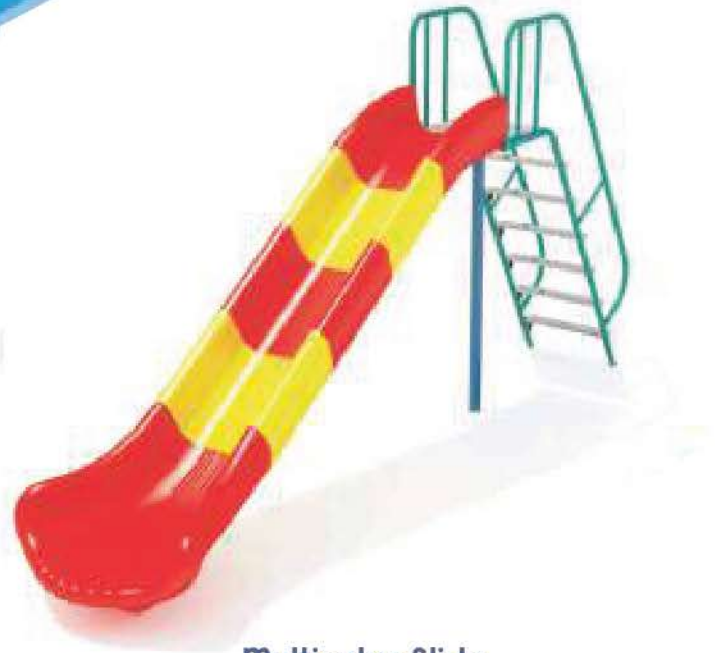
**RATE: 64999**



**Medium Slide**

| Product Description |                  |
|---------------------|------------------|
| Item No.:           | MS - 002         |
| Item Size:          | L12xB2.5xH5.5 ft |
| Remarks:            |                  |

**RATE: 52999**



**Multicolor Slide**

| Product Description |                  |
|---------------------|------------------|
| Item No.:           | MS - 009         |
| Item Size:          | L15 x B2 x H9 ft |
| Remarks:            |                  |

**RATE: 64000**

## Spiral Slide Platform

| Product Description |                  |
|---------------------|------------------|
| Item No.:           | MS - 012         |
| Item Size:          | L11x B5.6x H9 ft |
| Remarks:            |                  |

**RATE: 174999**



## Double Slide Station

| Product Description |                    |
|---------------------|--------------------|
| Item No.:           | MS - 011           |
| Item Size:          | L12 x B4.5 x H7 ft |
| Remarks:            |                    |

**RATE: 114999**

## Tube Straight Slide

| Product Description |                |
|---------------------|----------------|
| Item No.:           | MS - 014       |
| Item Size:          | L17x B5x H8 ft |
| Remarks:            |                |

**RATE: 129999**



## Tube Bent Slide Platform

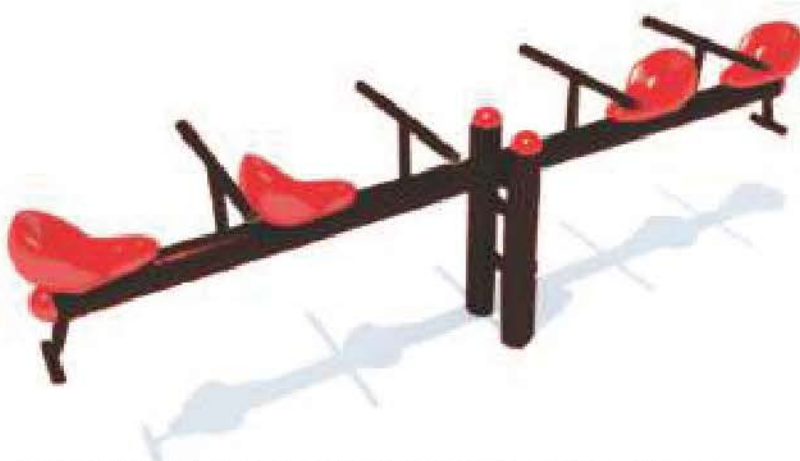
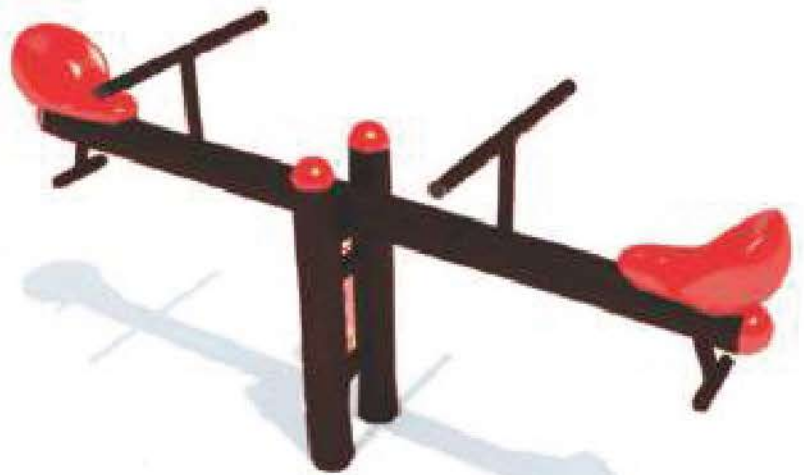
| Product Description |                  |
|---------------------|------------------|
| Item No.:           | MS - 013         |
| Item Size:          | L17 x B5 x H8 ft |
| Remarks:            |                  |

**RATE: 159999**

## Twin See Saw

| Product Description |                 |
|---------------------|-----------------|
| Item No.:           | SS - 001        |
| Item Size:          | L7x B2x H2.5 ft |
| Remarks:            |                 |

**RATE: 13999**



## Double See Saw

| Product Description |                   |
|---------------------|-------------------|
| Item No.:           | SS - 002          |
| Item Size:          | L9x B1.5x H2.5 ft |
| Remarks:            |                   |

**RATE: 19999**

## Horse See Saw

| Product Description |                 |
|---------------------|-----------------|
| Item No.:           | SS - 005        |
| Item Size:          | L9 x B2 x H3 ft |
| Remarks:            |                 |

**RATE: 39999**



## Spring See Saw

| Product Description |                   |
|---------------------|-------------------|
| Item No.:           | SS - 003          |
| Item Size:          | L7 x B2 x H2.5 ft |
| Remarks:            |                   |

**RATE: 13999**



### Small Merry Go Round

| Product Description |               |
|---------------------|---------------|
| Item No.:           | MG - 001      |
| Item Size:          | L4x B4x H4 ft |
| Remarks:            |               |

**RATE: 44000**



### Large Merry Go Round

| Product Description |               |
|---------------------|---------------|
| Item No.:           | MG - 004      |
| Item Size:          | L5x B5x H5 ft |
| Remarks:            |               |

**RATE: 53000**



### Duck MGR

| Product Description |               |
|---------------------|---------------|
| Item No.:           | MG - 002      |
| Item Size:          | L5x B5x H4 ft |
| Remarks:            |               |

**RATE: 65000**



### Sitting MGR

| Product Description |               |
|---------------------|---------------|
| Item No.:           | MG - 005      |
| Item Size:          | L6x B6x H3 ft |
| Remarks:            |               |

**RATE: 69000**



### Horse MGR

| Product Description |               |
|---------------------|---------------|
| Item No.:           | MG - 003      |
| Item Size:          | L5x B5x H4 ft |
| Remarks:            |               |

**RATE: 68000**



### Dolphin Spring Rider

| Product Description |                   |
|---------------------|-------------------|
| Item No.:           | SR - 001          |
| Item Size:          | L3.5x B1.8x H3 ft |
| Remarks:            |                   |

**RATE: 24999**



### Round Climber

| Product Description |               |
|---------------------|---------------|
| Item No.:           | CL - 001      |
| Item Size:          | L7x B7x H7 ft |
| Remarks:            |               |

**RATE: 75000**



### Duck Sitting Rider

| Product Description |                   |
|---------------------|-------------------|
| Item No.:           | SR - 002          |
| Item Size:          | L3x B1.5x H2.5 ft |
| Remarks:            |                   |

**RATE: 21999**



### Horse Spring Rider

| Product Description |                 |
|---------------------|-----------------|
| Item No.:           | SR - 003        |
| Item Size:          | L3.5x B2x H3 ft |
| Remarks:            |                 |

**RATE: 21999**



### Fancy Army Ladder

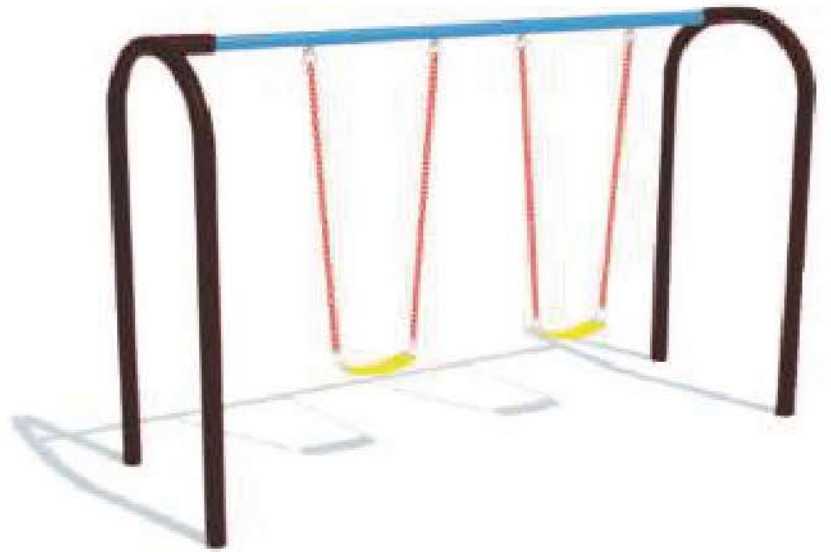
| Product Description |                 |
|---------------------|-----------------|
| Item No.:           | CL - 002        |
| Item Size:          | L9x B3.5x H7 ft |
| Remarks:            |                 |

**RATE: 57000**

## Double Swing U Shape

| Product Description |                |
|---------------------|----------------|
| Item No.:           | SW - 001       |
| Item Size:          | L10x B5x H8 ft |
| Remarks:            |                |

**RATE: 38999**



## Toddler Swing

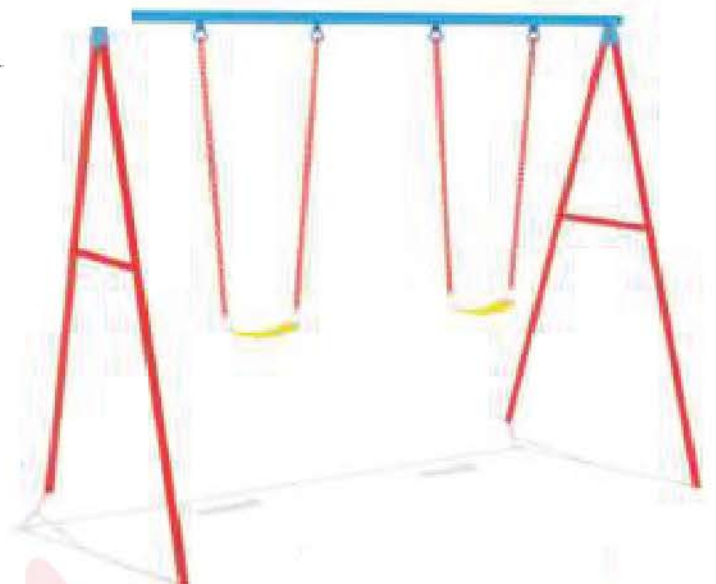
| Product Description |                |
|---------------------|----------------|
| Item No.:           | SW - 002       |
| Item Size:          | L10x B5x H8 ft |
| Remarks:            |                |

**RATE: 48999**

## Double A Shape Swing

| Product Description |                |
|---------------------|----------------|
| Item No.:           | SW - 003       |
| Item Size:          | L11x B6x H8 ft |
| Remarks:            |                |

**RATE: 32999**



## Octo Swing

| Product Description |               |
|---------------------|---------------|
| Item No.:           | SW - 004      |
| Item Size:          | L9x B5x H9 ft |
| Remarks:            |               |

**RATE: 49999**



## Arch Swing

| Product Description |               |
|---------------------|---------------|
| Item No.:           | SW - 005      |
| Item Size:          | L9x B5x H9 ft |
| Remarks:            |               |

**RATE: 43999**



## Eco Play I

| Product Description |                |
|---------------------|----------------|
| Item No.:           | MPS - 51       |
| Item Size:          | L21x B7x H8 ft |
| Remarks:            |                |

**RATE: 159999**

## Eco Play 2

| Product Description |                |
|---------------------|----------------|
| Item No.:           | MPS - 52       |
| Item Size:          | L16x B7x H8 ft |
| Remarks:            |                |

**RATE: 199999**



## Eco Play 3

| Product Description |                |
|---------------------|----------------|
| Item No.:           | MPS - 53       |
| Item Size:          | L18x B7x H8 ft |
| Remarks:            |                |

**RATE: 159999**

## Eco Play 4

| Product Description |                |
|---------------------|----------------|
| Item No.:           | MPS - 54       |
| Item Size:          | L16x B8x H8 ft |
| Remarks:            |                |

**RATE: 149999**



## Slide Swing and Sea Saw Combo

| Product Description |                |
|---------------------|----------------|
| Item No.:           | MPS - 55       |
| Item Size:          | L15x B5x H8 ft |
| Remarks:            |                |

**RATE: 139999**

## Tube Double Slide Combo

| Product Description |                  |
|---------------------|------------------|
| Item No.:           | MPS - 003        |
| Item Size:          | L20x B18x H13 ft |
| Play Area:          | 25 x 23 ft       |
| Remarks:            |                  |

**RATE: 329999**



## Double Multiplay With Swing

| Product Description |                    |
|---------------------|--------------------|
| Item No.:           | MPS - 004          |
| Item Size:          | L22x B15.5x H12 ft |
| Play Area:          | 27 x 20 ft         |
| Remarks:            |                    |

**RATE: 329999**



## MID Swing Combo

| Product Description |                  |
|---------------------|------------------|
| Item No.:           | MPS - 027        |
| Age Group:          | 3 - 12 years     |
| Capacity:           | 4 children       |
| Item Size:          | L16x B17x H12 ft |
| Play Area:          | 30 x 27 ft       |
| Remarks:            |                  |

**RATE: 109999**



## Garden House

| Product Description |                  |
|---------------------|------------------|
| Item No.:           | MPS - 040        |
| Age Group:          | 3 - 12 years     |
| Capacity:           | 5 children       |
| Item Size:          | L8x B4x H10.5 ft |
| Play Area:          | 21 x 18 ft       |
| Remarks:            |                  |

**RATE: 185999**



## Outdoor Play House

| Product Description |                  |
|---------------------|------------------|
| Item No.:           | MPS - 041        |
| Age Group:          | 3 - 12 years     |
| Capacity:           | 5 children       |
| Item Size:          | L8x B8x H10.5 ft |
| Play Area:          | 21 x 18 ft       |
| Remarks:            |                  |

**RATE: 199999**



## Beetle Multiplay Station

| Product Description |                 |
|---------------------|-----------------|
| Item No.:           | MPS - 028       |
| Age Group:          | 3 - 12 years    |
| Capacity:           | 8 children      |
| Item Size:          | L17x B9x H12 ft |
| Play Area:          | 31 x 22 ft      |
| Remarks:            |                 |

**RATE: 299999**



## Twin Slider Station

| Product Description |                  |
|---------------------|------------------|
| Item No.:           | MPS - 029        |
| Age Group:          | 3 - 12 years     |
| Capacity:           | 8 children       |
| Item Size:          | L21x B16x H13 ft |
| Play Area:          | 35 x 29 ft       |
| Remarks:            |                  |

**RATE: 425000**

## Floral Multiplay Station

| Product Description |                   |
|---------------------|-------------------|
| Item No.:           | MPS - 030         |
| Age Group:          | 3 - 12 years      |
| Capacity:           | 8 children        |
| Item Size:          | L17.5x B9x H12 ft |
| Play Area:          | 31 x 22 ft        |
| Remarks:            |                   |

**RATE: 265000**



## Climb & Hurdle Station

| Product Description |                 |
|---------------------|-----------------|
| Item No.:           | MPS - 031       |
| Age Group:          | 3 - 12 years    |
| Capacity:           | 8 children      |
| Item Size:          | L21x B8x H11 ft |
| Play Area:          | 34 x 23 ft      |
| Remarks:            |                 |

**RATE: 378000**



## Cute Station

| Product Description |                 |
|---------------------|-----------------|
| Item No.:           | MPS - 032       |
| Age Group:          | 3 - 12 years    |
| Capacity:           | 4 children      |
| Item Size:          | L81x B9x H11 ft |
| Play Area:          | 34 x 23 ft      |
| Remarks:            |                 |

**RATE: 255000**



## Single Station With Tunnel

| Product Description |                  |
|---------------------|------------------|
| Item No.:           | MPS - 033        |
| Age Group:          | 3 - 12 years     |
| Capacity:           | 4 children       |
| Item Size:          | L16x B12x H12 ft |
| Play Area:          | 29 x 25 ft       |
| Remarks:            |                  |

**RATE: 260000**

## 2 Swing | Slide Combo

| Product Description |                 |
|---------------------|-----------------|
| Item No.:           | MPS - 001       |
| Age Group:          | 3 - 12 years    |
| Item Size:          | L12x B9x H11 ft |
| Play Area:          | 16 x 12 ft      |
| Remarks:            |                 |

**RATE: 112000**



## Double Slide Bridge Swing Combo

| Product Description |                    |
|---------------------|--------------------|
| Item No.:           | MPS - 002          |
| Age Group:          | 3 - 12 years       |
| Item Size:          | L20.5x B12x H13 ft |
| Play Area:          | 24 x 16 ft         |
| Remarks:            |                    |

**RATE: 205000**



## Double Multiplay with Ladder



| Product Description |                  |
|---------------------|------------------|
| Item No.:           | MPS - 005        |
| Age Group:          | 3 - 12 years     |
| Item Size:          | L26x B17x H13 ft |
| Play Area:          | 30 x 22 ft       |
| Remarks:            |                  |

**RATE: 378000**

## Tube & Single Slide Combo

| Product Description |                  |
|---------------------|------------------|
| Item No.:           | MPS - 006        |
| Age Group:          | 3 - 12 years     |
| Item Size:          | L16x B12x H13 ft |
| Play Area:          | 24 x 16 ft       |
| Remarks:            |                  |



**RATE: 428000**



## Single Station Combo

| Product Description |                  |
|---------------------|------------------|
| Item No.:           | MPS - 007        |
| Age Group:          | 3 - 12 years     |
| Item Size:          | L12x B12x H12 ft |
| Play Area:          | 30 x 22 ft       |
| Remarks:            |                  |

**RATE: 425000**



## Tube Double Slide Combo

| Product Description |                  |
|---------------------|------------------|
| Item No.:           | MPS - 008        |
| Age Group:          | 3 - 12 years     |
| Item Size:          | L21x B11x H13 ft |
| Play Area:          | 24 x 16 ft       |
| Remarks:            |                  |

**RATE: 440000**

## Double Slide Multi Play

| Product Description |                  |
|---------------------|------------------|
| Item No.:           | MPS - 009        |
| Age Group:          | 3 - 12 years     |
| Item Size:          | L12x B12x H12 ft |
| Play Area:          | 25 x 25 ft       |
| Remarks:            |                  |

**RATE: 405000**



## Spiral Triple Multi Play

| Product Description |                  |
|---------------------|------------------|
| Item No.:           | MPS - 010        |
| Age Group:          | 3 - 12 years     |
| Item Size:          | L23x B14x H13 ft |
| Play Area:          | 28 x 18 ft       |
| Remarks:            |                  |

**RATE: 372000**



## Triple Multi Play Colored Slide

| Product Description |                  |
|---------------------|------------------|
| Item No.:           | MPS - 011        |
| Age Group:          | 3 - 12 years     |
| Item Size:          | L30x B16x H13 ft |
| Play Area:          | 25 x 25 ft       |
| Remarks:            |                  |

**RATE: 450000**



## L Shape Multi Play

| Product Description |                  |
|---------------------|------------------|
| Item No.:           | MPS - 012        |
| Age Group:          | 3 - 12 years     |
| Item Size:          | L21x B32x H42 ft |
| Play Area:          | 26 x 23 ft       |
| Remarks:            |                  |

**RATE: 430000**

## Triple Multi Play with Army Ladder

| Product Description |                  |
|---------------------|------------------|
| Item No.:           | MPS - 013        |
| Item Size:          | L30x B19x H13 ft |
| Play Area:          | 35 x 25 ft       |
| Remarks:            |                  |

**RATE: 490000**



## Multiplay Climber Ladder

| Product Description |                  |
|---------------------|------------------|
| Item No.:           | MPS - 014        |
| Age Group:          | 3 - 12 years     |
| Item Size:          | L25x B17x H13 ft |
| Play Area:          | 25 x 20 ft       |
| Remarks:            |                  |

**RATE: 535000**



## Double Wavy Swing Combo

| Product Description |                  |
|---------------------|------------------|
| Item No.:           | MPS - 015        |
| Item Size:          | L24x B15x H13 ft |
| Play Area:          | 28 x 20 ft       |
| Remarks:            |                  |

**RATE: 420000**



## Play Center With Swing Tube & Slide

| Product Description |                  |
|---------------------|------------------|
| Item No.:           | MPS - 016        |
| Age Group:          | 3 - 12 years     |
| Item Size:          | L26x B14x H13 ft |
| Play Area:          | 25 x 17 ft       |
| Remarks:            |                  |

**RATE: 445000**



## Spiral & Double Slide



| Product Description |                  |
|---------------------|------------------|
| Item No.:           | MPS - 017        |
| Item Size:          | L13x B11x H13 ft |
| Play Area:          | 28 x 20 ft       |
| Remarks:            |                  |

**RATE: 619999**

## 3 Station Tunnel Combo



| Product Description |                  |
|---------------------|------------------|
| Item No.:           | MPS - 018        |
| Age Group:          | 3 - 12 years     |
| Item Size:          | L40x B15x H13 ft |
| Play Area:          | 25 x 17 ft       |
| Remarks:            |                  |

**RATE: 895000**

## 3 Slide Combo



| Product Description |                  |
|---------------------|------------------|
| Item No.:           | MPS - 019        |
| Item Size:          | L25x B13x H13 ft |
| Play Area:          | 30 x 20 ft       |
| Remarks:            |                  |

**RATE: 550000**

## 3 Station Tunnel Climber Combo

| Product Description |                  |
|---------------------|------------------|
| Item No.:           | MPS - 020        |
| Item Size:          | L32x B16x H15 ft |
| Play Area:          | 40 x 25 ft       |
| Remarks:            |                  |

**RATE: 895000**



## Multi Activity Climber Combo

| Product Description |                  |
|---------------------|------------------|
| Item No.:           | MPS - 022        |
| Item Size:          | L25x B13x H13 ft |
| Play Area:          | 35 x 20 ft       |
| Remarks:            |                  |

**RATE: 605000**



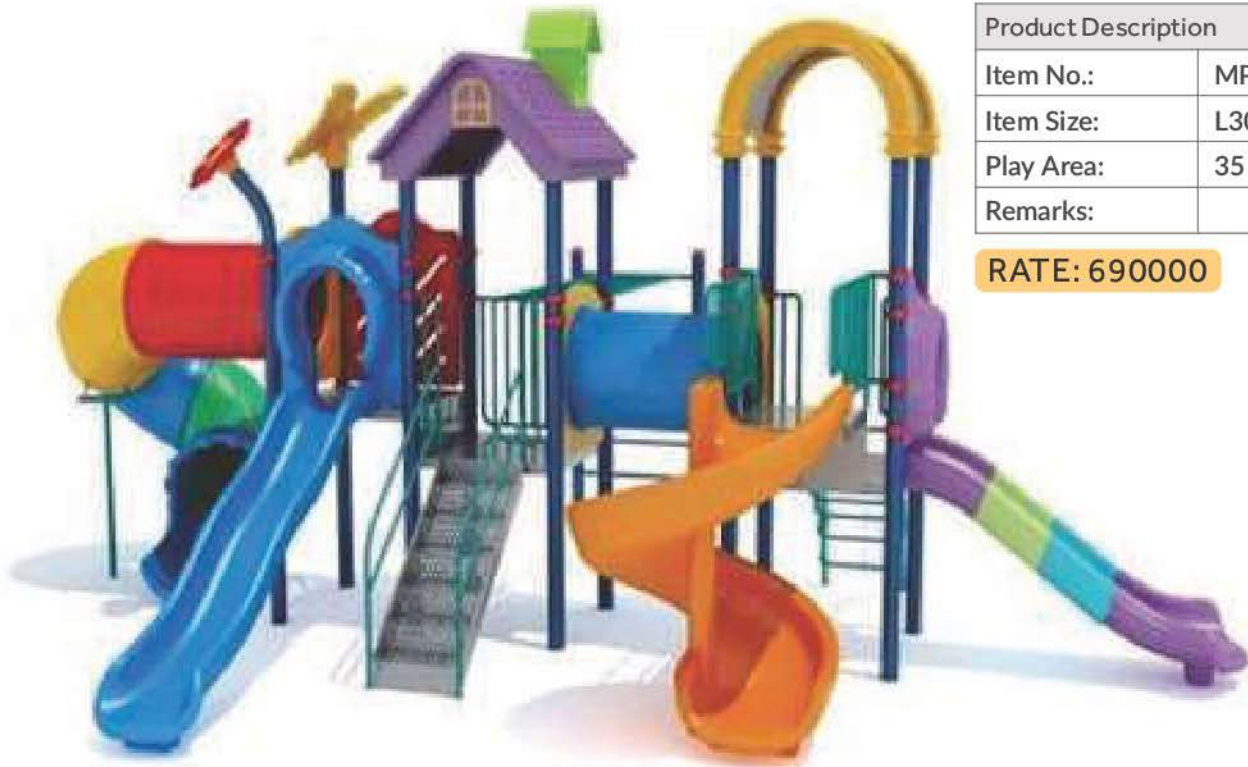
## Junior Hut Combo

| Product Description |                  |
|---------------------|------------------|
| Item No.:           | MPS - 021        |
| Item Size:          | L32x B16x H15 ft |
| Play Area:          | 40 x 25 ft       |
| Remarks:            |                  |

**RATE: 435000**



## U Shape Tunnel Slide Combo



| Product Description |                  |
|---------------------|------------------|
| Item No.:           | MPS - 023        |
| Item Size:          | L30x B14x H13 ft |
| Play Area:          | 35 x 17 ft       |
| Remarks:            |                  |

**RATE: 690000**

## 2 Station Climber Combo

| Product Description |                  |
|---------------------|------------------|
| Item No.:           | MPS - 024        |
| Item Size:          | L16x B16x H13 ft |
| Play Area:          | 25 x 25 ft       |
| Remarks:            |                  |

**RATE: 330000**



## Multi Activity Tube Slide Combo

| Product Description |                  |
|---------------------|------------------|
| Item No.:           | MPS - 025        |
| Item Size:          | L25x B13x H13 ft |
| Play Area:          | 35 x 20 ft       |
| Remarks:            |                  |

**RATE: 575000**



## Multiplay Double Slide Tunnel Combo

| Product Description |                  |
|---------------------|------------------|
| Item No.:           | MPS - 026        |
| Item Size:          | L25x B16x H13 ft |
| Play Area:          | 35 x 20 ft       |
| Remarks:            |                  |

**RATE: 425000**



## Hanging Bar Twin Station

| Product Description |                  |
|---------------------|------------------|
| Item No.:           | MPS - 034        |
| Item Size:          | L14x B11x H11 ft |
| Play Area:          | 27 x 25 ft       |
| Capacity:           | 12               |
| Age Group:          | 3-12             |
| Remarks:            |                  |

**RATE: 405000**



## Spiral & Climber Station

| Product Description |                  |
|---------------------|------------------|
| Item No.:           | MPS - 035        |
| Item Size:          | L21x B11x H13 ft |
| Play Area:          | 34 x 24 ft       |
| Capacity:           | 12               |
| Age Group:          | 3-12             |
| Remarks:            |                  |

**RATE: 390000**



## 2 Slide Climber Twin Station



| Product Description |                    |
|---------------------|--------------------|
| Item No.:           | MPS - 036          |
| Item Size:          | L25x B13.5x H12 ft |
| Play Area:          | 37 x 27 ft         |
| Capacity:           | 12                 |
| Age Group:          | 3-12               |
| Remarks:            |                    |

**RATE: 590000**

## Multi Gym Single Station

| Product Description |                  |
|---------------------|------------------|
| Item No.:           | MPS - 037        |
| Item Size:          | L17x B14x H12 ft |
| Play Area:          | 30 x 27 ft       |
| Capacity:           | 4                |
| Age Group:          | 3-12             |
| Remarks:            |                  |



**RATE: 245000**

## Eco Multiplay Station



| Product Description |                    |
|---------------------|--------------------|
| Item No.:           | MPS - 038          |
| Item Size:          | L18.5x B12x H12 ft |
| Play Area:          | 32 x 25 ft         |
| Capacity:           | 12                 |
| Age Group:          | 3-12               |
| Remarks:            |                    |

**RATE: 377000**

## Puppy Multiplay Station

| Product Description |                    |
|---------------------|--------------------|
| Item No.:           | MPS - 039          |
| Item Size:          | L15x B14x H11.5 ft |
| Play Area:          | 28 x 27 ft         |
| Capacity:           | 8                  |
| Age Group:          | 3-12               |
| Remarks:            |                    |

**RATE: 290000**



## Garden Play Station

| Product Description |                  |
|---------------------|------------------|
| Item No.:           | MPS - 042        |
| Item Size:          | L20x B19x H12 ft |
| Play Area:          | 33 x 31 ft       |
| Capacity:           | 20               |
| Age Group:          | 3-12             |
| Remarks:            |                  |

**RATE: 450000**



## Hexagon Play Center

| Product Description |                   |
|---------------------|-------------------|
| Item No.:           | MPS - 043         |
| Item Size:          | L25x B8x H12.5 ft |
| Play Area:          | 38 x 21 ft        |
| Capacity:           | 6                 |
| Age Group:          | 3-12              |
| Remarks:            |                   |

**RATE: 445000**





## L Shape Jumbo Play Station

| Product Description |                |
|---------------------|----------------|
| Item No.:           | MPS - 044      |
| Item Size:          | L36xB21xH14 ft |
| Play Area:          | 49 x 34 ft     |
| Capacity:           | 20             |
| Age Group:          | 3-12           |
| Remarks:            |                |

**RATE: 785000**

## Jumbo Play Area

| Product Description |                   |
|---------------------|-------------------|
| Item No.:           | MPS - 045         |
| Item Size:          | L29.5xB23xH105 ft |
| Play Area:          | 43 x 36 ft        |
| Capacity:           | 25                |
| Age Group:          | 3-12              |
| Remarks:            |                   |

**RATE: 885000**





**Adventure Outlook 1  
PLAYSET SHOWN WITH:**

- Adventure Outlook
- Green Tarp Roof
- 3 Position 8' Swing Beam
- 2 - Belt Swings
- Trapeze Bar
- 5' Rock Wall
- Picnic Table
- 10' Wave Slide
- Olympian Outlook

**Item No.:** 7701

**Size:** 16x8x12 ft

**RATE:** 399999



**Adventure Outlook 1  
PLAYSET SHOWN WITH:**

- Olympian Outlook
- Mahogany Tarp Roof
- 3 Position 9' Swing Beam
- 2 - Belt Swings
- Trapeze Bar
- 6' Rock Wall
- Picnic Table
- 12' Rocket Slide

**Item No.:** 7702

**Size:** 16x11x15ft

**RATE:** 419999



## Outdoors



### Adventure Outlook 2 PLAYSET SHOWN WITH:

- Adventure Outlook
- Wood Roof
- Gable Kit
- 3 Position 8' Swing Beam
- 2 - Belt Swings
- Trapeze Bar
- Lower Floor
- Playhouse Window Wall
- Side Table with Roof
- 5' Rock Wall
- 10' Double Wall Wave

Item No.: 7703

Size: 16x12x12 ft

RATE: 459999



### Adventure Outlook XL 1 PLAYSET SHOWN WITH:

- Adventure Outlook XL
- Wood Roof
- Gable Kit
- 3 Position 8' Swing Beam
- 2 - Belt Swings
- Trapeze Bar
- 5' Rock Wall XL
- Picnic Table XL
- 10' Double Wall Wave Slide

Item No.: 7704

Size: 19x8x12 ft

RATE: 469999



# Outdoors



## Olympian Outlook XL 2B

PLAYSET SHOWN WITH:

- Olympian Outlook XL
- Wood Roof
- Gable Kit
- 3 Position 9' Swing Beam
- 2 - Belt Swings
- Trapeze Bar
- Playhouse
- Side Table with Roof
- 6' Rock Wall XL
- 12' Rocket Slide

Item No.: 7705

Size: 15x15x15 ft

RATE: 487500



## Olympian Outlook XL 1

PLAYSET SHOWN WITH:

- Olympian Outlook XL
- Wood Roof
- Gable Kit
- Olympian Outlook Balcony
- 3 Position 9' Swing Beam
- 2 - Belt Swings
- Trapeze Bar
- 6' Rock Wall XL
- Lower Floor
- Playhouse
- 6' Open Spiral Slide
- 12' Rocket Slide

Item No.: 7706

Size: 19x15x15 ft

RATE: 568750



## Olympian Outlook XL 5

### PLAYSET SHOWN WITH:

- Olympian Outlook XL
- Wood Roof
- Gable Kit
- Tire Swivel Swing
- 3 Position 9' Swing Beam
- 2 - Belt Swings
- Trapeze Bar
- Playhouse
- Side Table with Roof
- Ultimate Climber
- Loft XL
- Cabin Package
- Loft Porch
- 7' Spiral Tube Slide
- Gang Plank
- 12' Rocket Slide

**Item No.:** 7707

**Size:** 27x15x12 ft

**RATE:** 675000





## Outdoors



### Adventure Summit 1

**PLAYSET SHOWN WITH:**

- Adventure Summit
- Green Tarp Roof
- Accessory Arm w/ Rope Ladder
- Accessory Arm w/ Trapeze Bar
- 3 Position 8' Swing Beam
- 3 - Belt Swings
- 10' Wave Slide

**Item No.:** 7708

**Size:** 19x11x13 ft

**RATE:** 587500



### Olympian Summit XL 2

**PLAYSET SHOWN WITH:**

- Olympian Summit XL
- Wood Roof
- Gable Kit
- Accessory Arm w/ Rope Ladder
- 3 Position 9' Swing Beam
- 3 - Belt Swings
- Gang Plank
- 12' Rocket Slide

**Item No.:** 7709

**Size:** 19x11x16 ft

**RATE:** 537500



## Adventure Treehouse Jumbo Space Saver

### PLAYSET SHOWN WITH:

- Adventure Treehouse Jumbo (5' Deck)
- Wood Roof
- 2 Position Accessory Arm
- Belt Swing
- Trapeze Bar
- 10' Rocket Slide

**Item No.:** 7710

**Size:** 11x9x13 ft

**RATE:** 487500



## Free-Standing Swing Set

### PLAYSET SHOWN WITH:

- Free-Standing Swing Set (8' High)
- 2 - Belt Swings
- Trapeze Bar

**Item No.:** 7711

**Size:** 9x6x9 ft

**RATE:** 135999



## Adventure Treehouse Jumbo 1

**PLAYSET SHOWN WITH:**

- Adventure Treehouse Jumbo (5' Deck)
- Wood Roof
- 3 Position 8' Swing Beam
- Steel Reinforced Beam Kit
- 2 - Belt Swings
- Trapeze Bar
- 10' Rocket Slide

**Item No.:** 7712

**Size:** 15x11x13 ft

**RATE:** 487500



## Olympian Treehouse Jumbo 1

**PLAYSET SHOWN WITH:**

- Olympian Treehouse Jumbo (6' Deck)
- Wood Roof
- 3 Position 9' Swing Beam
- Steel Reinforced Beam Kit
- 2 - Belt Swings
- Trapeze Bar
- 12' Rocket Slide

**Item No.:** 7713

**Size:** 15x11x16 ft

**RATE:** 537500



# Outdoors

## Titan Treehouse Jumbo 1

### PLAYSET SHOWN WITH:

- Titan Treehouse Jumbo (7' Deck)
- Wood Roof
- 3 Position 10' Swing Beam
- Steel Reinforced Beam Kit
- 2 - Belt Swings
- Trapeze Bar
- Fort Angle Braces
- 14' Rocket Slide

Item No.: 7714

Size: 14x15x16 ft

RATE: 537500





# Outdoors



## Titan Treehouse Jumbo 5

### PLAYSET SHOWN WITH:

- Titan Treehouse Jumbo (7' Deck)
- Playhouse
- Porch
- Lemonade Stand
- Tower
- Wood Roofs
- Loft
- 6 - Dormers
- Balcony
- 3 Position 9' Swing Beam
- Steel Reinforced Beam Kit
- 2 - Belt Swings
- Trapeze Bar
- 9' Spiral Tube Slide
- 14' Rocket Slide
- 12' Rocket Slide
- 6' Rock Wall
- Gang Plank
- Fireman's Pole
- Steering Wheel
- Monkey Bar
- Monkey Bar Fireman's Pole

Item No.: 7715

Size: 32x20x16 ft

**RATE: 912500**





## Treehouse Combo Playset

### Adventure Outlook 1 PLAYSET SHOWN WITH:

- Titan Treehouse Jumbo
- Playhouse
- Loft
- Triangle Bridge
- 2 - Olympian Treehouse Jumbos
- Adventure Bridge
- Cabin Package
- Balcony
- Lower Cottage
- Porch
- Lemonade Stand
- Wood Roofs
- 8 - Dormers
- 3 Position 9' Swing Beam
- Steel Reinforced Beam Kit
- 2 - Belt Swings
- Trapeze Bar
- 9' Spiral Tube Slide
- 2 - 14' Rocket Slides
- 2 - 12' Rocket Slides
- Monkey Bars
- Monkey Bar Fireman's Pole
- Fireman's Pole
- 6' Rock Wall
- Picnic Table
- Tire Swivel Swing
- Gang Plank
- Ship's Wheel
- Steering Wheel
- Binoculars
- Telescope

**Item No.:** 7716

**Size:** 40x18x16 ft

**RATE:** 1012500



**Outdoor Cycle**

|                     |       |
|---------------------|-------|
| Product Description |       |
| Item No.:           | GYM01 |

**RATE: 49999**

**Elephant Cross Trainer**

|                     |       |
|---------------------|-------|
| Product Description |       |
| Item No.:           | GYM02 |

**RATE: 49999**



**Shoulder Wheel**

|                     |       |
|---------------------|-------|
| Product Description |       |
| Item No.:           | GYM03 |

**RATE: 49999**



**Strength Training Bars**

|                     |       |
|---------------------|-------|
| Product Description |       |
| Item No.:           | GYM04 |

**RATE: 49999**



**Double Air Swinger**

|                     |       |
|---------------------|-------|
| Product Description |       |
| Item No.:           | GYM05 |

**RATE: 49999**



**Body Shaper Manual**

|                     |       |
|---------------------|-------|
| Product Description |       |
| Item No.:           | GYM06 |

**RATE: 51999**



**Double Cross Walker**

|                     |       |
|---------------------|-------|
| Product Description |       |
| Item No.:           | GYM08 |

**RATE: 62499**



**Single Air Swinger**

|                     |       |
|---------------------|-------|
| Product Description |       |
| Item No.:           | GYM07 |

**RATE: 49999**



**Double Sit Up**

|                     |       |
|---------------------|-------|
| Product Description |       |
| Item No.:           | GYM09 |

**RATE: 62499**



**Rower**

|                     |       |
|---------------------|-------|
| Product Description |       |
| Item No.:           | GYM10 |

**RATE: 49999**



**Pull Down**

|                     |       |
|---------------------|-------|
| Product Description |       |
| Item No.:           | GYM12 |

**RATE: 79999**



**Double Leg Press Machine**

|                     |       |
|---------------------|-------|
| Product Description |       |
| Item No.:           | GYM11 |

**RATE: 62499**



**Waist and Back Stretch**

|                     |       |
|---------------------|-------|
| Product Description |       |
| Item No.:           | GYM13 |

**RATE: 58999**



**Rider**

|                     |       |
|---------------------|-------|
| Product Description |       |
| Item No.:           | GYM14 |

**RATE: 49999**



**Chest Press Double**

|                     |       |
|---------------------|-------|
| Product Description |       |
| Item No.:           | GYM16 |

**RATE: 79999**



**Taichi Spinner Outdoor Fitness**

|                     |       |
|---------------------|-------|
| Product Description |       |
| Item No.:           | GYM15 |

**RATE: 58999**



# EPDM Soft Flooring

Thickness: 25 - 35 mm





# Multicolor and Attractive Designs

*Safe for Kids*





# EPDM Court

Options Available are

Badminton Court

Basket Ball Court

Tennis Court

Volleyball Court

Football Court

Cricket Pitch

Running Track





Oct 18, 2023, 19:42







# **BODY LINE**

Inspiring Fitness

## **Corporate & Head Office**

14-D Ballygunge Circular Road (opp. AAEL) Kolkata 700 019

Contact: + 91 83350 68089 / 033 4064 8222

## **Other Showroom:**

Akankha More, New Town (Opp. Kia Showroom) | Ph: +91 33 4809 2831

## **Bhubaneswar Office:**

501 Kharvela Nagar (1st floor), Janpath, Bhubaneswar 751 001  
Contact: + 91 98308 00698 / 0674 2380824 / 0674 2380925

**E mail:** [bodylinesports@gmail.com](mailto:bodylinesports@gmail.com) | **Website:** [bodylinesports.co.in](http://bodylinesports.co.in)